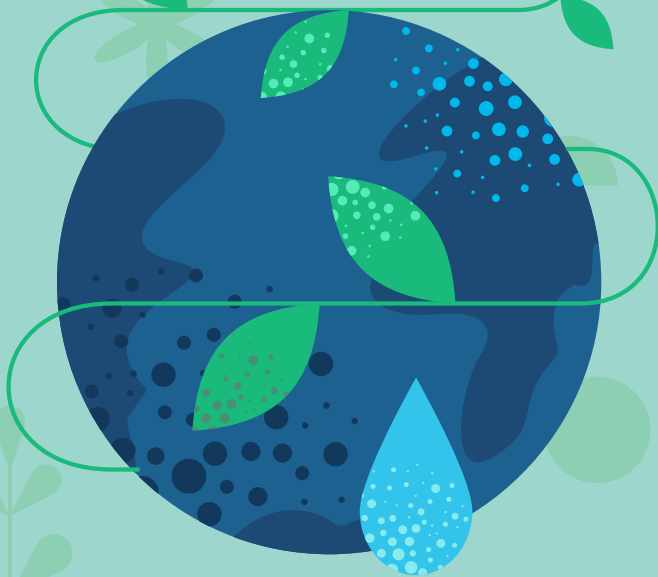


Questions and  
answers about

# TARI

(waste tariff)



**Explore all the latest  
information on TARI  
(waste tariff).**



**C.B.B.O.**  
ambiente e territorio

## 1. What is TARI?

**TARI** ('Tariffa sui Rifiuti') is a municipal waste **tax** collected by the **Municipality** or by the service provider responsible for waste collection and disposal.

## 2. Who does it apply to?

**TARI** applies to **households** (homes and associated premises) and to **businesses** (shops, cafés and restaurants, craft and industrial businesses, and offices).

## 3. Why do I have to pay?

Because you occupy a property, whether owned or held under any other title, used as a residence or for business activities and capable of generating waste. This includes all households and businesses associated with **properties, premises or operational outdoor areas** that may produce household waste.

## 4. Who is the service provider?

**C.B.B.O.** is an example of a service provider. It is a company wholly **owned** by its member municipalities and subject to their control. C.B.B.O. is therefore the operational arm of the municipalities, responsible for urban environmental services, including the collection and disposal of **Municipal Waste**.

## 5. Where does C.B.B.O. provide TARI services?

C.B.B.O. currently provides TARI services in the municipalities of **Calvisano, Castenedolo, Ghedi, Montichiari and Montirone**, where it directly issues TARI bills and manages administrative, postal and financial services, as well as door-to-door collection, street cleaning, the operation of recycling centres, and all related activities.

## 6. What types of waste does C.B.B.O. manage for its municipalities?

C.B.B.O. manages all **Municipal Waste**. **Municipal waste**, including **residual municipal waste** (the non-recyclable waste remaining after separate collection), comprises **household waste, street sweeping waste, waste found on streets** and other publicly accessible areas, and **green waste** from areas such as gardens, parks and cemeteries.



## 7. How do the Municipality and C.B.B.O. work together to manage the waste collection service?

Based on the services required by the Municipality—such as door-to-door collection, street cleaning, the operation of recycling centres, the removal of illegally dumped waste, and waste disposal—an **operational, financial and economic plan** is drawn up. This sets out all the services and expected costs for one year, which C.B.B.O. must comply with.

**By law**, the plan must ensure that all waste management costs are fully covered by the TARI (waste tariff).

## 8. Who sets and approves the tariffs?

Once the **operational, financial and economic plan** for waste management has been approved, the total cost is allocated among all users according to criteria set by the Municipality—for example, for households, the charge is calculated based on the size of the property and/or the number of occupants, while for businesses it is based on the type of activity (e.g. hotels, restaurants, newsagents, pharmacies, companies, etc.).


## 9. How is the tariff structured and calculated?

**By law, the tariff** consists of a **fixed component**—covering capital investments, depreciation and indirect management costs—and a **variable component**, which includes a **‘calculated’** part and a **‘measured’** part.

### FOR HOUSEHOLDS:

- The **fixed** component is based on the total declared **floor area** of the property;
- The **calculated part of the variable component** is based on the number of **occupants**;
- The **measured part of the variable component** is based on the **amount of residual waste** produced by each user over the year.

### FOR BUSINESSES:

- Both the **fixed** component and the **calculated part of the variable component** are based on the declared **floor area** of the premises;
  - The **measured part of the variable component** is based on the **amount** of residual waste disposed of over the year.
- 

### 10. Are reductions available for users in certain cases?

Yes, **reductions** in the waste tariff are available for both households and businesses, in accordance with the **municipal TARI regulations**, which can be found on the website **www.cbbo.it** under 'TARI' -> 'TARI MANAGEMENT'.

### 11. How is the amount of waste produced measured?

The amount of waste disposed of by each user is **measured** by C.B.B.O. using **indirect weighing systems**, which record either the **volume collected (bags)** or the **number of bin collections** using electronic tags. These are then converted into weight using a **conversion factor** set annually by the Municipality, also for billing purposes.

### 12. Which waste fractions are currently measured by C.B.B.O.?

**C.B.B.O.** is able to measure residual waste **precisely**. This is the non-recyclable waste remaining after separate collection and requires specific management and disposal costs.

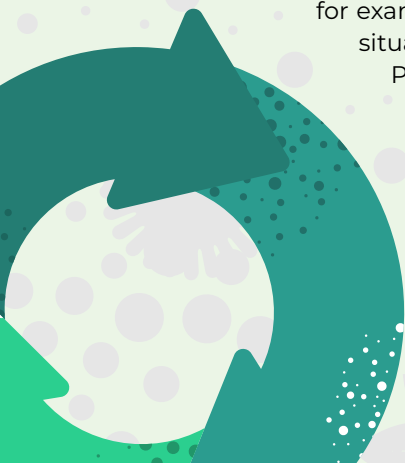
### 13. For door-to-door collection using bags, how many are provided?

C.B.B.O. provides a sufficient number of **bags** to ensure the proper operation of the **door-to-door collection** service. Bags represent a **cost** for the Municipality, and any misuse results in a **collective cost** that is ultimately **charged to individual users** in their bills. As a general rule, for residual waste, one roll of **10 bags** is provided at each collection. However, subject to availability, a second roll may be requested. **Unnecessary stockpiling** should be avoided, as the bags collected **are charged** in the **final TARI bill** as **actual usage**.

### 14. What type of bags are provided for household residual waste collection?

**Bags** suitable for proper collection have a capacity of **60 litres**, except for households with particularly large families. **Larger bags**—for example, 110 litres—are intended only for specific situations and for **non-domestic use**.

Please note that even if a bag is **not completely full**, the full volume (and corresponding weight) will still be **charged** in the final TARI bill.



## 15. How can I reduce my use of residual waste bags?

- **Sort your waste carefully** by separating the different fractions;
- Only **put out** residual waste bags **when they are full**, to avoid a higher charge based on the amount of residual waste produced;
- **Avoid stockpiling** bags;
- Households are advised to choose **bags with a capacity suited to their actual needs (rather than convenience)**, in order to allow better compaction of waste.

## 16. When is the TARI due and how can it be paid?

The **TARI is due one month after it is issued** and can be paid by:

- SEPA direct debit, formerly RID
- Bank transfer
- PagoPA (electronic payment system).

## 17. What happens if the TARI is not paid?

Debt recovery procedures are initiated, **initially on an amicable basis** (e.g. telephone reminders, emails, or requests to attend at the office), while also considering the possibility of **paying in instalments**.

## 18. What happens if the non-payment continues?

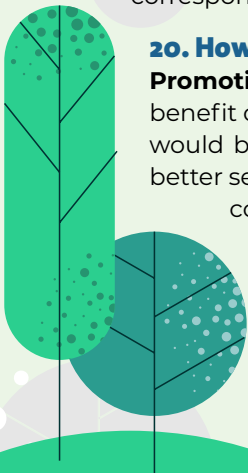
The process then moves to **formal debt recovery**, where **full payment** of the outstanding amount is required in a **single instalment**, with the application of **late payment interest, penalties** (where applicable) and **notification costs**, up to **enforced recovery**, including through a **tax injunction**.

## 19. What happens in practice if there are repeated non-payments?

**Non-payment of the TARI** results in a cost for all users. In order to recover these costs, future **TARI bills will increase**, without any corresponding increase in services.

## 20. How can the issue of non-payment be reduced?

**Promoting** a culture of **compliance** is important for the benefit of everyone: if everyone paid what is due, overall costs would be lower and **more resources** would be available for better services, while also increasing **public awareness** of the common good, **environmental protection** and the **upkeep of the local area**.



**View, read or print  
the full guide  
from our website:  
[www.cbbo.it](http://www.cbbo.it)**

## TARI OFFICE OPENING HOURS

	MONDAY	TUESDAY	WEDNESDAY	THURSDAY	FRIDAY
<b>CALVISANO</b> PUNTOECO PIAZZA SAN SILVESTRO, 2	---	10.00-12.30	---	10.00-12.30	---
<b>CASTENEDOLO</b> PUNTOECO V.LE DELLA RIMEMBRANZA 2	---	---	15.30-18.30	---	9.30-12.30
<b>GHEDI</b> PUNTOECO VIA GARIBALDI, 11	---	16.00-19.00	---	---	9.00-12.30
<b>MONTICHIARI</b> PUNTOECO VIA PAOLO VI, 21	---	16.00-18.30	---	16.00-18.30	9.00-12.00
<b>MONTIRONE</b> AT THE MUNICIPAL OFFICES (2ND FLOOR) PIAZZA MANZONI, 17	10.00-13.00	---	14.30-18.30	---	---

**N.B.:** Further information regarding the waste tariff and the documentation required to complete the relevant procedures is available on the website [www.cbbo.it](http://www.cbbo.it), under 'TARI' > 'TARI MANAGEMENT'.



**C.B.B.O.**  
ambiente e territorio

**C.B.B.O. s.r.l.**  
via Industriale 33/35, Ghedi (BS)

**Tel.** 030 7282050 / 800 595020  
**E-mail** [tributi@cbbo.it](mailto:tributi@cbbo.it)

**[www.cbbo.it](http://www.cbbo.it)**